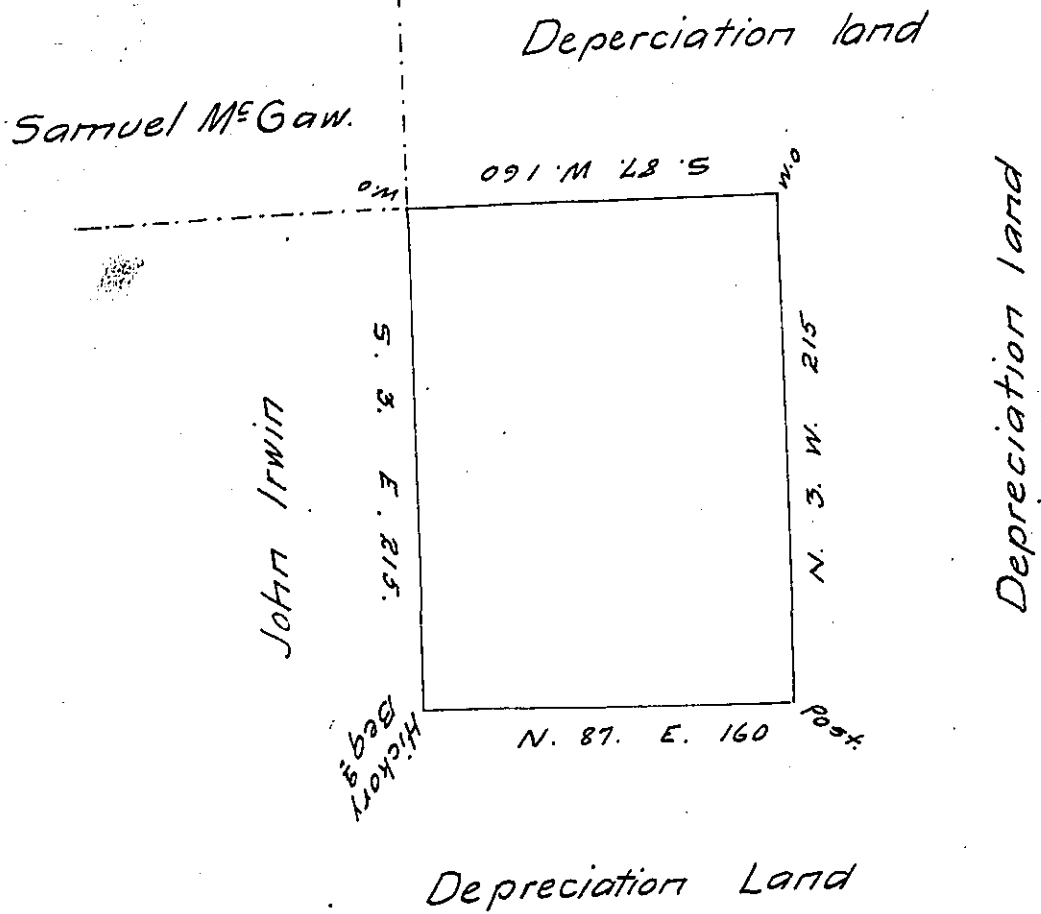


✓
(on New Sewick)
BEAVER,



I Certify that the above is a Correct draft of
 a Survey executed Oct^r 25th 1809 in pursuance of a
 Warrant Granted to William Leet dated January ^{31st} 1809,
 Situate in New Sewickly Township Beaver County, Adjoining
 lands of John Irwin and others, Containing 202 Acres &
 128 Perches and allowance of 6 per Cent.

Jonathan Mendenhall D.S.

To Andrew Porter Esq^r }
 Surveyor General }

Beaver Nov^r 2nd 1809

IN TESTIMONY that the above is a copy of the original remaining on file in
 the Department of Internal Affairs of Pennsylvania, made
 conformably to an Act of Assembly approved the 16th day of
 February, 1833, I have hereunto set my Hand and caused
 the Seal of said Department to be affixed at Harrisburg,
 this seventh day of September 1905

James P. Johnson
 Secretary of Internal Affairs.